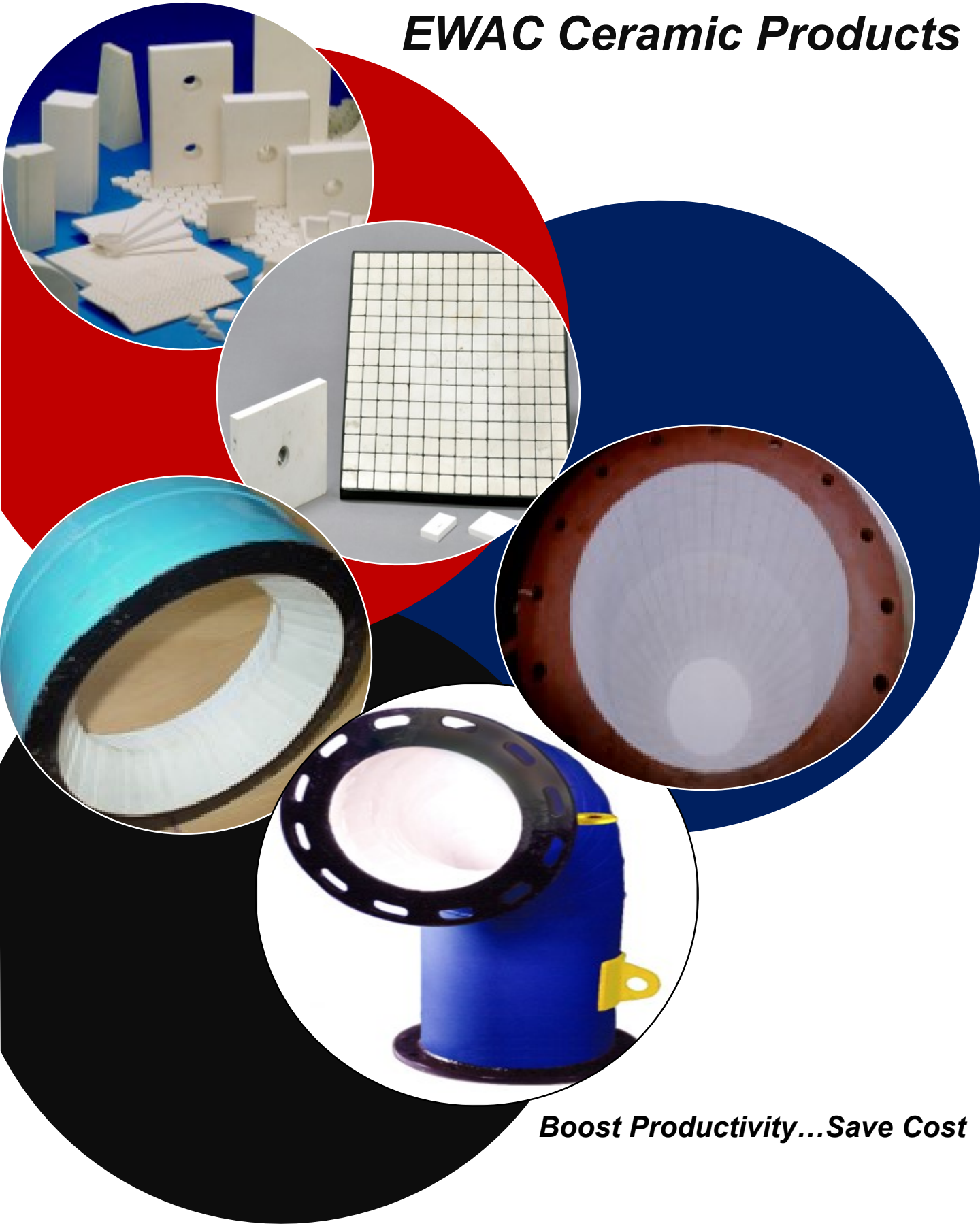


EWAC Alloys Limited



EWAC Ceramic Products



Boost Productivity...Save Cost

EWAC, an expert in wear solutions, offers a range of Ceramic products that fight against heavy wear factors like Impact, Abrasion, Erosion etc. Our Ceramic range of products have an optimum density of 3.5 gm/cc, with high hardness (75 on R45N) to protect your valuable components.

EWAC CERA GLIDE 90

Pastable and Weldable ceramic tiles with 90 - 92% alumina content.

- **Thicker CERA GLIDE**, can be welded with a metal ferrule on mother plate and a ceramic cap can be pasted above the welded ferrule to have a smooth surface.
- **Thinner CERA GLIDE**, can be directly pasted on the mother plate / surface with the help of Epoxy resins suitable for substrate.

AVAILABLE SIZES :

Sr. No.	Product details (High Alumina Wear Resistant Ceramic Tiles)
1	6mm thick with 50mm L X 50mm W (Pastable)
2	8mm thick with 50mm L X 50mm W (Pastable)
3	10mm thick with 100mm L X 100mm W (Pastable & Weldable)
4	12mm thick with 100mm L X 100mm W (Pastable & Weldable)
5	15mm thick with 100mm L x 50mm W (Weldable)

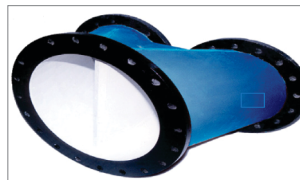


* Customised sizes and shapes available on demand

EWAC CERA GLIDE CLC (Ceramic Lined Components)

For non-standard profiles, EWAC can supply Pre-Engineered CERA GLIDE CLC tiles suiting to complex geometric profiles. Our expertise in CAD design ensures exact fit on the contours of any component and enhances its life, protecting from wear factors. EWAC can also supply Ceramic Lined Components of various shapes and sizes lined with Pre-Engineered tiles.

* Customised range is available.



EWAC ZUPERMAT PLC (Pulley Lagging Ceramic)

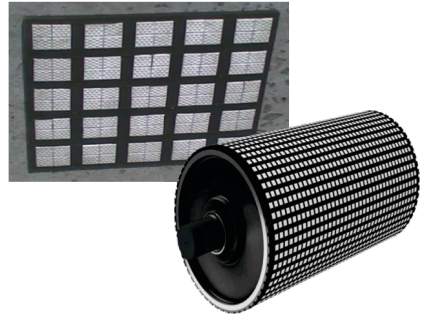
EWAC's ZUPERMAT PLC is ideal for Pulley Lagging with a combination of alumina ceramic tiles & high-grade rubber, which increases the co-efficient of friction to reduce belt slippage even under wet or muddy conditions. The tiles are dimpled for positive contact with the conveyor belt.

Outstanding Features:

- Virtually eliminates conveyor belt slippage.
- Reduce power consumption due to less tension load on pulleys and nil slippage.
- Excellent wear & abrasion resistance, resulting in 8-10 times (approx.) more life than conventional lagging.
- Non clog design prevents material build up on the pulley.
- Drastic reduction in production loss (5-7% approx) and downtime.

AVAILABLE SIZES:

Pulley Lagging Ceramic	Size
EWAC ZUPERMAT PLC	500 x 500 x 12mm
	500 x 400 x 12mm
	500 x 500 x 15mm
	500 x 400 x 15mm
	300 x 15mm Roll
	300 x 12mm Roll

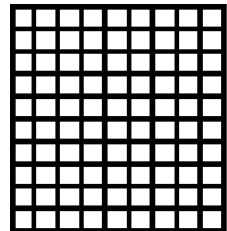
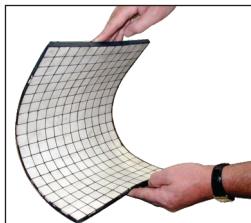
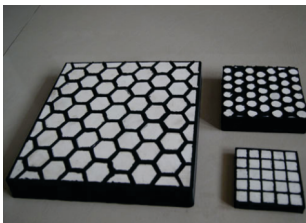


EWAC ZUPERMAT RBC (Rubber Backed Ceramic)

This liner is a combination of high-quality alumina ceramic tiles embedded in special rubber and is suitable for applications where material is falling from a height. Main advantage is that the ceramic tiles can resist abrasion and the rubber can take high impact load. These RBC liners can be directly pasted on the mother plate using Epoxy Resin.

AVAILABLE SIZES:

Sr. No.	Tile Size	MAT size	The thickness is variable according to tile requirement
1.	150 x 100 x 15mm	520 x 630 x 20mm	Available in 10, 12, 15, 20, 25mm thickness with Rubber thickness of 5, 7, 10, 12, 15, 20mm
2.	50 x 50 x 10mm	500 x 500 x 20mm	Available in 6, 8, 10, 12, 15, 20mm thickness with Rubber thickness of 5, 7, 10, 12, 15, 20mm.
3.	25 x 25 x 6mm	500 x 500 x 8mm	Available in 6, 8, 10mm thickness with Rubber thickness of 5, 7, 10mm.
4.	20 x 20 x 8mm - Hexagonal	500 x 500 x 13mm	Available in 6, 8, 10, 15mm thickness with Rubber thickness of 10, 15, 20mm.
5.	25 x 25 x 10mm - Hexagonal	500 x 500 x 15mm	Available in 10, 12, 15, 20mm thickness with Rubber thickness of 5, 10, 15, 20mm.
6.	20 x 20 x 10mm - Cylindrical	500 x 500 x 15mm	Available in 10, 15, 20, 25mm thickness with Rubber thickness of 5, 10, 15, 20mm.



EWAC ZUPERMAT RMS (Rubber & Mild Steel Backed)

These liners are same as EWAC ZUPERMAT RBC but additionally backed by 3mm or 5mm MS Plate with Studs. These RMS Liners can be directly bolted on the mother plate.

